

KOSTA BODA

SWEDEN 1742



2019



The history of Swedish glasswork

Kosta was founded during a period of Swedish History known as the age of freedom, when the country was gradually recovering from the effects of the disastrous wars it had embarked upon at the beginning of the eighteenth century. The age of freedom was characterized by a new spirit of optimism which infused both public and private life and inspired numerous ventures of all kinds. Cultural and scientific academies were established, government became progressively more democratic, and new ground was broken in the arts and sciences alike.

It was during this dynamic age that a glassworks, surprisingly modern for its time, was founded by two far-sighted entrepreneurs in what is now the village of Kosta. With the help of skilled craftsmen brought in from abroad, the new enterprise was soon on stable ground.

Today Kosta is a glasshouse with its roots deeply embedded in the village and surrounding countryside. As a company it has lived long; and it is still proudly independent and capable of surviving for many years to come.

For over two hundred and seventy years that have passed since Kosta's foundation, courage and determination have been the hallmarks of

those who have worked there. Cooperation, stubbornness, dexterity, craftsmanship, inventiveness and artistic flair are other qualities which have helped Kosta survive.

Kosta Boda designs are collected by individuals and museums and showcased in exhibits and public installations the world over. A few of the American museums that own or have shown Kosta Boda designs include the American Craft Museum, Cooper-Hewitt Museum, Corning Museum of Glass, and the Metropolitan Museum of Art in New York, as well as the Toledo Museum of Art in Ohio and the Rockford Museum of Art in Illinois.

With playful and bold designs, Kosta Boda's products are a natural addition to your home décor. Our creative designers produce expressive objects with great personality to complement any home, any room, anywhere.

With its rich personality and wide variety, Kosta Boda's range offers everything from familiar glass tableware to innovative glass design pieces. In short, you can find the perfect gift for anyone. Including yourself, of course!





Lena Bergström.

Lena Bergström is one of Sweden's most award-winning and productive designers. Art glass, utility glass, lighting, textiles, jewellery and public artworks. Nothing seems impossible for Lena. Together with the skilled glassblowers and mastercutters at Kosta Boda she is constantly challenging the limits of the glass. "The unique properties of the glass and the craftsmanship of the glassworkers always inspires me to great deeds but at the same time I want the end result to look natural and beautiful."



Ernst Billgren.

Ernst Billgren works in highly varied media such as painting, sculpture, scenography, fiction and film. ernst billgren's artistry is characterised by a combination of breadth and diversity that is unique on the Swedish art scene. His works often interweave historical notation and references with popular perceptions of art in his endeavour to investigate the contemporary world and artistic conventions.



Frida Fjellman.

Runs her own studio in Stockholm since 2000. Trained at the University College of Arts, Crafts and Design in Stockholm and the Pilchuck Glass School in Washington. Fjellman has a long career of solo exhibitions, both in Sweden and at an international level. Her exhibition Inside Frida Fjellman's Head, featured at the Gustavsbergs Konsthall and Eskilstuna Konsthall, was highly acclaimed. She's won many awards over the years, and in 2015 she received the Konstnärsfonden's coveted five-year art stipend.



Hanna Hansdotter.

Trained in glassblowing at the Kosta Glass Centre, then continued on to the University College of Arts, Crafts and Design, where she recently earned her degree. Though new to the design world, Hansdotter has already featured in several shows. The Fairyland exhibition in 2012 was something of a breakthrough for her, and most recently she participated in an acclaimed exhibition at The Glassery.



Anna Ehrner.

"For me, creativity takes place in the blowing room. This is where glass is conceived, where it is fashioned and comes alive. I want to work with the glass, not against it. In my designs, I try to follow along with the melt, with the sheer power of the glass, although I try at the same time to identify the simple and the subtle." Anna Ehrner is experimental and stylistic in her expression. Her work is characterised by minimalistic yet powerful design language. Coloured lines inside the glass are a recurring feature for Anna Ehrner.



Kjell Engman.

Kjell Engman is at the height of his creative powers. His infinite fantasy and storytelling transforms into wonderful collections and art glass. With a background as a professional guitarist in the seventies, Kjell Engman finds his inspiration in music. He also draws inspiration from the animal kingdom, and the elements of light and sound are always a part of his design process, and art installations. Kjell Engman is frequently engaged in public artworks throughout the world.



Åsa Jungnelius.

Born contemporary with punk bands like the Sex Pistols and Pere Ubu, trendsetters that influenced all art practitioners for many years to come. In addition to her day job as artist and designer, she's also a senior lecturer at the University College of Arts, Crafts and Design in Stockholm, where she inspires a new generation of creators. Jungnelius's glass objects in the Make Up series have spread her name to a wide audience, and her feminist approach to life suffuses everything she does.



Ludvig Löfgren.

"My approach to glass is sensitive, passionate and patient. I describe atmosphere, depict moods through references both to history and present. Molten glass enables me to work with sculpture and pictures simultaneously. Glass can be seductive, beautiful, soft and compliant to work with. But at same time it can scar you for life."



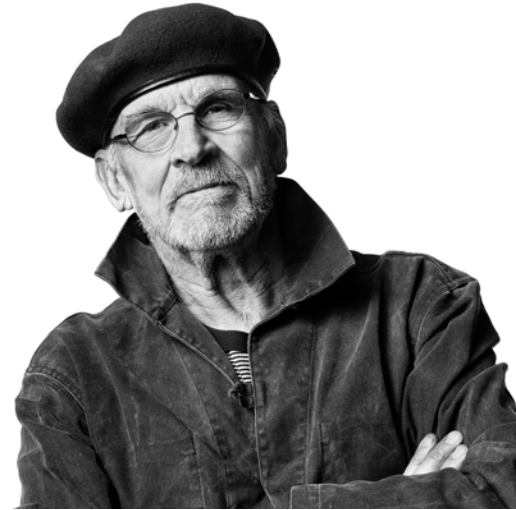
Sara Persson.

Sara Persson is a new designer for Kosta Boda with a degree in product design. She has always been fascinated by glassblowing and the many possibilities the material offers. The natural world is a major source of inspiration, as is the blowing room work itself. In collaboration with Kosta Boda, she creates products that are durable, functional and aesthetic.



Martti Rytkönen.

Martti Rytkönen aims to tell us something about the material, how it can be soft, strong and light, at the same time as heavy and hard. He thinks that glass is sensual and pleasing. We understand what he means when we see his crystal creations that can have the simplest shapes imaginable, without being hard or formal.



Bertil Vallien.

“For me, the blowing room is the centre of everything. It's like ladling matter out of a volcano and watching the glowing lava turn to ice. Knowing the exact moment at which to capture a shift of light or expression and wrench the secret from the glass is what it's all about.” Bertil Vallien has since 1963 worked at Kosta Glassworks and made himself world famous both as a designer and glass artist. He is internationally renowned, holds several design and art awards, and his work is represented in the most prestigious museums around the world.



Göran Wärff.

“The melt, glowing in the furnace, is what beckons me on to new discoveries. With every gather, I feel an almost irresistible urge to give new expression to the magic of glass, to create a work that will be the bearer of light, the sea and the air. each piece that I design I try to make a receptacle for light, for warmth and sensuality.”



Mattias Stenberg.

“For me, it's important to go back to my own initial impressions of Kosta Boda as an innovative, experimental company where they accept and even encourage experimentation and product development out “on the floor” in the studio.” Mattias Stenberg is originally trained as an engineer, architect and researcher in Sweden and the US and holds a Licentiate degree in Engineering from the Royal Institute of Technology in Stockholm. Mattias holds several design, interior design and architecture awards.



Ulrica Hydman Vallien.

The 21st of March, Ulrica Hydman Vallien left us. With great gratitude, we can look back on all the years that Ulrica formed Kosta Boda. Her way of expressing herself in glass and painting has become a signum for us. Our warmest thoughts go to Bertil Vallien and his family. She was the embodiment of Swedish glass art. No living Swedish artist could have claimed anywhere near the popularity of Ulrica Hydman Vallien. Whether collection or one-of-a-kind pieces, she placed the same passion into every work of her hands. With motifs from the innermost corners of human life, she has created a narrative glass art form with feminist and Biblical touches, alongside her utility glass. Tulips and snakes figure repeatedly in her own Paradise works. Assertive, controversial, beloved.



Sara Woodrow.

Sara Woodrow is a familiar name among many young design lovers in Sweden. Her work is characterized by a presence in time and a strong sense of trends. She is a contemporary designer who follows her own way. “For me it has always been important to convey an emotion or a story within my art. Inspiration comes from everything around Including music, which is a very important part of my life.”



BASKET

Design Anna Ehrner • 2012

All About You

Design Sara Woodrow • 2015

For this collection I wanted to come up with girls that were little parts of my personality, whilst also drawing lots of inspiration from the fashion world. I don't know if you have ever had your special someone go away? When the one you love is on the other side of the world and it feels as if you're going to break and the days just go slower and slower. Eventually you see each other again and no feeling in the world is better. Love you, Miss you, Want you and Need you.



7091532
Tumbler Pair (Love you, pink)
4 3/8 x 3 1/2 in. 21 1/8 oz.
\$26.50



7091530
(Miss you, blue)



7091531
(Want you, red)



7051218
Bowl (large)
3 x 15 in.
Turquoise
\$155



7051415
Copper (large)
\$185



7051414
Copper (small)
\$130



7051212
Green (small)
3 x 12 in.
\$105



7051211
White (small)
\$105



7051323
Red (small)
\$105



7051324
Blue (small)
\$105



Björk

Design Sara Persson · 2017

The graphic pattern is reminiscent of the green fir trees and their dark trunks. They are inspired by the deep woods and countryside of Småland. Crisp, green leaves and colourful flowers combined with the graphic patterns on the vases make a glorious centrepiece on any table, whether in the living room or kitchen.



7041628
Vase (wide)
7 3/4 x 7 3/8 in.
\$150

7041626
Vase
4 7/8 in x 4 1/4 in.
\$85

7041627
Vase (tall)
11 7/8 x 4 3/8 in.
\$130



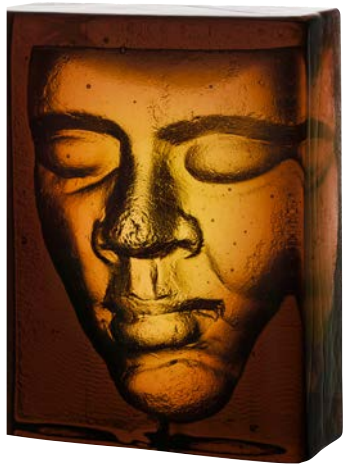
BOHEME

Design Bertil Vallien • 2017

A character that goes his own way. Difficult to figure out. In this glass block it is only his impression, created by the light and the varying thicknesses of the glass, that conjures up his image.



7091727
Block (green)
7 1/2 in. x 6 in. x 2 1/2 in.
\$200



7091728
Block (amber)
7 1/2 in. x 6 in. x 2 1/2 in.
\$200

BRAINS

Design Bertil Vallien • 1998

By this time the handpainted glass heads called Brains are famous. It is even said the Pope may have one.



7090307
Jiménez
3 x 1 3/4 in.
\$235



7090898
Oden
3 x 1 3/4 in.
\$235



7099859
Karolina
3 x 1 3/4 in.
\$235



Big Brain

Design Bertil Vallien • 2017 • Handmade in Kosta, Sweden



A new member of the Brains family, decorative collector's items intended for wall mounting with the included stainless steel clamp. Shaped by hand in the hot shop, then cut and polished. "Look In" has a cut-glass "window" which invites the viewer to look in. "Look" has paint and silver leaf applied to the finished head. The white thread is spun on the inner feature and then heavily fire polished. The stripes represent meandering lines of thought.

7091736

Look In
5 3/4 x 3 1/3 in.
\$225

7091735

Look
5 3/4 x 3 1/3 in.
\$225

BRICK

Design Anna Ehrner • 2010



7061033

Votive
3 x 3 3/8 in.
Green
\$50

7061034

Purple

7061032

Blue

7061030

Black

7061031

White



Brük.

EVERYDAY ELEGANCE. DESIGNED IN SWEDEN.

This is Brük, the new colorful collection designed by Kosta Boda in Småland, Sweden. Inspired by nature, designed in a beautiful symbiosis of function and form. Made with ultimate precision to last and spark through many and any occasion. These artifacts are made for you to use, every day, made to feel good in your hand, made with great attention to details and longevity.

The word Brük stems from the Swedish word “to use” but is also a link to the special place where it all started – The village of Kosta in Småland with its old glassworks factory, surrounded by black lakes, deep forests and beautiful nature. More than 275 years of collective experience and a tradition of craftsmanship, creating durable and high quality products. The Brük collection is dishwasher safe.



The Bruk family is growing and our range of porcelain is expanding.

Bruk tea mug. A tea mug for all those chilly times when you need your favorite tea or café au lait to relax. Our tea mug from the Bruk collection – simply beautiful, versatile and sustainable. Dishwasher safe.

Bruk teapot. For those calm nights on the couch, vibrant afternoon teas and breakfasts that can go on for hours. This teapot holds several cups. It comes in off-white and the clean design is crowned with the cross significant for the Bruk collection. Dishwasher safe.

Bruk milk jug. The jug for every time a straight cup of coffee or tea is not enough. It is generous in size while the design is simple and crowned with the characteristic Bruk collection cross. The porcelain is durable and comes in classic off-white tone. Dishwasher and microwave-safe.



7091805 NEW
TEA MUG (PAIR)
3 3/4 x 4 in.
White
\$39.95



7081801 NEW
MILK JUG
5 1/2 x 4 3/8 in.
White
\$30



7081800 NEW
TEAPOT
6 1/8 x 6 1/8 in.
White
\$50

BRUK PORCELAIN

Design Anna Ehrner • 2018

The beautifully designed porcelain mugs, delivered with a practical cap to keep the heat, or as a coaster protecting the table.



7091717
Sea Turquoise

7091718
Denim Blue



7091716
Smokey grey



7091719
Bordeaux Red



7091616
Mug With Oak Lid (porcelain, pair)
4 x 3 1/3 in. 11 5/9 oz.
\$39.95



7091702
Espresso Mug (white, set of 4)
2 1/2 in. x 2 1/2 in.
\$19.95



7071620
Plate (bone china)
1 x 10 5/8 in.
\$24.95

Brük glasses for a variety of drinks, brighten up everyday life.

Are you someone who loves design and functionality? So do we. This glass was created to put a touch of sparkle into everyday life with a design that enhances the bouquet. Use the medium Brük glass to serve wine, juice or a cold dessert. Use the large Brük glass to serve beer, a soft drink or maybe a refreshing smoothie. Simply beautiful, versatile and sustainable. Dishwasher safe, chip-resistant rim.

Design Maria Vinka



BRUK BRUNCH

Design Anna Ehrner • 2017

Brunch Set

Our breakfast set is the perfect Brük starter kit. The 12 piece set includes 4 small plates, 4 small bowls, and 4 large tumblers. The 16 piece set also includes 4 mugs with lids. Stackable. Dishwasher safe. Designed for optimal water drain.

7015535

12 Piece Brunch Set (clear)
4 small bowls, 4 small plates, 4 large tumblers
\$119.95

7015536

12 Piece Brunch Set (blue)
\$119.95

7015537

12 Piece Brunch Set (grey)
\$119.95

7015538

16 Piece Brunch Set (clear)
4 small bowls, 4 small plates, 4 large tumblers, 4 mugs w/lids
\$179.95

7015539

16 Piece Brunch Set (blue)
\$179.95

7015540

16 Piece Brunch Set (grey)
\$179.95

Tumbler Set

Our tumblers are perfect for any occasion - a beer with dinner, a cooling glass of lemonade, your morning juice or a glass of water on your beside table. 8 pieces. Stackable. Dishwasher safe. Designed for optimal water drain.

7015541

Tumbler Set (clear)
8 large tumblers
\$59.95

7015542

Tumbler Set (blue)
\$59.95

7015543

Tumbler Set (grey)
\$59.95



BRUK JARS

Design Anna Ehrner • 2018

Jars. Beautiful open storage calls for good looking jars. With Bruk jars, the goodies are also ready to be served at a nicely set table. The mouth blown, handmade Bruk jars come in a range of three sizes, in clear glass as well as in transparent colour. The jars are durable and user friendly. Designed with an airtight lid made out of cork.



7051703

Jar with Cork (clear, small)
3 x 3 1/8 in.
7 1/2 oz.
\$40



7051706

Jar with Cork (clear, medium)
4 1/2 x 4 5/8 in.
27 oz.
\$50



7051709

Jar with Cork (clear, large)
6 5/8 x 5 1/4 in.
57 oz.
\$60



7051704

Jar with Cork (amber, small)
3 x 3 1/8 in.
7 1/2 oz.
\$40



7051707

Jar with Cork (amber, medium)
4 1/2 x 4 5/8 in.
27 oz.
\$50



7051710

Jar with Cork (amber, large)
6 5/8 x 5 1/4 in.
57 oz.
\$60



7051705

Jar with Cork (grey, small)
3 x 3 1/8 in.
7 1/2 oz.
\$40



7051708

Jar with Cork (grey, medium)
4 1/2 x 4 5/8 in.
27 oz.
\$50



7051711

Jar with Cork (grey, large)
6 5/8 x 5 1/4 in.
57 oz.
\$60

BRUK ANYTHING BOWLS

Design Anna Ehrner • 2016

Anything Bowls. Light a candle in our colorful votives, store your sugar and spices, keep your plants artfully potted, or discover your own uses! Designed to brighten the night and glisten in the day.



7061600
Votive Anything Bowl (clear)
2 1/3 x 2 5/8 in.
\$9.95
7061632
(set of 3)
\$20.00



7061602
Water Blue
7061635
(set of 3)



7061609
Dark brown



7061604
Aubergine Purple
7061633
(set of 3)



7061608
Sea Turquoise



7061612
Forest green
7061630
(set of 3)



7061607
Rusty Orange



7061606
Bright Yellow



7061605
Light Pink
7061636
(set of 3)



7061601
Smoke grey
7061634
(set of 3)



7061603
Apple Green



7061611
Deep red
7061631
(set of 3)



BRUK BOWLS AND PLATES

Design Anna Ehrner • 2016


The small bowls are perfect for your breakfast cereals as well as the elegant strawberry dessert. They create a perfect mix combined with the two bigger serving bowls. Our plates brightens your everyday life with their durability, usability and elegant form.



7051600
Bowl (clear, small)
2 1/3 x 6 2/7 in.
19 4/5 oz.
\$14.95



7051602
Water Blue



7051601
Smoke grey





7071601
Salad Plate (clear)
5/8 x 7 2/3 in.
\$14.95

7071603
Water Blue

7071602
Smoke grey



BRUK GLASSES

Design Anna Ehrner • 2016

Our glasses are perfect for any occasion – the dinner beer, a glass of lemonade, the morning juice or the glass of water on the bedside table.



7091606
Tumbler (clear, small, pair)
3 1/7 x 3 in.
6 3/5 oz.
\$14.95



7091611
Tumbler (clear, large, pair)
4 1/2 x 3 1/3 in.
11 5/9 oz.
\$19.95



7091608
Water Blue



7091613
Water Blue



7091607
Smoke grey



7091612
Smoke grey

BRUK SERVING BOWLS

Design Anna Ehrner • 2016

The bowls in the Bruk series are designed to be decorative pieces for everyday and special occasions. Fill them with fresh fruit, a bubbly and delicious punch or a decadent dessert. Like its siblings in the Bruk collection this medium-sized bowl comes in thick, centrifuge, colored glass with a durable edge. The bowls are stackable and dishwasher safe.



7051804 NEW
Serving Bowl (clear)
4 ³/₈ x 8 ¹/₂ in.
\$50



7051805 NEW
Serving Bowl (apple green)
4 ³/₈ x 8 ¹/₂ in.
\$50



7051806 NEW
Serving Bowl (water blue)
4 ³/₈ x 8 ¹/₂ in.
\$50



7051807 NEW
Serving Bowl (amber)
4 ³/₈ x 8 ¹/₂ in.
\$50

Medium and large bowls. Perfect for great sallads, fruit, potatoes, generous servings or just as decoration. The oak lids turn the bowls into jars keeping food fresh.



7051603
Serving Bowl (clear, medium)
3 ¹/₂ x 8 in. 49 ¹/₂ oz.
\$29.95



7051604
Serving Bowl (clear, large)
4 x 9 ⁴/₉ in. 82 ¹/₂ oz.
\$39.95



7031600
Serving Board/Lid (oak, medium)
¹/₂ x 8 ¹/₃ in.
\$24.95



7031601
Serving Board/Lid (oak, large)
¹/₂ x 9 ²/₃ in.
\$29.95



Our large and delicately designed vase is made to bring the best out of every flower.

7041601
Vase (clear)
7 ²/₃ x 5 ¹/₂ in.
\$49.95

BRUK CARAFES

Design Anna Ehrner • 2016

Our elegant and practical carafes are designed to keep any beverage, on any table. It fits perfect in your fridge door and its wooden cap keeps things fresh.



7081600
Carafe With Oak Lid (clear)
10 ⁵/₆ x 4 in.
44 ⁵/₉ oz.
\$49.95



3 Piece Set
\$49.95
Great Value!

7081620
Carafe Set (clear)
\$49.95



7081602
Water Blue
\$49.95



7081601
Smoke grey
\$49.95

CELEBRATE
Design Kjell Engman • 2013



- 7091301**
Champagne Bottle (blue)
7 3/8 x 2 3/8 in.
\$125
- 7091302**
Red
- 7091303**
Gold
- 7091304**
Wine Bottle (blue)
7 1/2 x 2 1/8 in.
\$75
- 7091305**
Red
- 7091306**
Green

CONNECT
Design Kjell Engman • 2006



Like a loving couple, these two handsome candlesticks of undulating clear glass rest against each other. Together they form a beautiful heart.

- 7060625**
Candlestick (pair)
8 3/8 x 11 in.
\$155



Crystal Magic
Design Åsa Jungnelius • 2018



- 7091750**
Wine (clear)
7 3/8 x 3 3/4 in.
14 oz.
\$65



- 7091751**
Coupe (clear)
5 1/8 x 4 1/2 in.
6 3/4 oz.
\$65



- 7091752**
Tumbler (clear)
3 3/8 x 3 3/8 in.
8 3/4 oz.
\$65



- 7091753**
Tumbler (pink)
3 3/8 x 3 3/8 in.
8 3/4 oz.
\$65

Contrast

Design Anna Ehrner • 2005

Artsy and expressive by Anna Ehrner at her best. Choose between bowls, a dish and a vase in different colours. The coloured veils and bars inside the glass have become of a signature for Anna.



CONTRAST

Design Anna Ehrner • 2005



7091602
Tumbler (multicolor)
5 x 3 in.
13 1/5 oz.
\$30



7091617
White



7091603
Wine (multicolor)
6 1/8 x 3 in.
10 oz.
\$35



7091618
White



7050510
Bowl (black, small)
3 3/8 x 6 1/4 in.
\$50



7050512
Blue



7050513
Lime



7050511
White



7050610
Bowl (black, medium)
4 7/8 x 9 in.
\$100



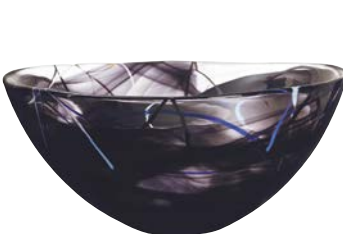
7050612
Blue



7050613
Lime



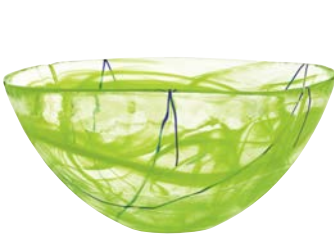
7050611
White



7050452
Bowl (black, large)
6 3/8 x 13 3/4 in.
\$150



7050451
Blue



7050514
Lime



7050450
White



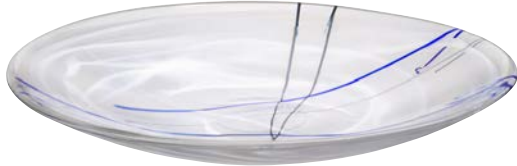
7070612
Platter (black)
2 3/8 x 15 in.
\$150



7070613
Lime



7070611
Blue



7070610
White



7041010
Vase (black)
8 x 6 in.
\$100



7041012
Blue



7041013
Lime



7041011
White

Artsy and expressive by Anna Ehrner at her best. Choose between bowls, a dish and a vase in different colours. The coloured veils and bars inside the glass have become of a signature for Anna.



DREAMER

Design Bertil Vallien • 2017



7091733
Paperweight
6 in. x 4 7/8 in.
\$500

EARTH

Design Bertil Vallien • 2010



7091328
My Universe
3 3/4 in. x 4 1/8 in.
\$225



7091035
Home
\$225

FIDJI

Design Kjell Engman • 1988



7048838
Vase (small)
11 3/8 x 4 3/8 in.
\$260



7048839
Vase (medium)
14 3/8 x 5 3/8 in.
\$300



7048840
Vase (large)
17 3/8 x 6 3/8 in.
\$365

GLOBE

Design Anna Ehrner • 2015

Anna Ehrner is experimental and stylistic in her expression. Her work is characterized by minimalistic yet powerful design language, and colored lines inside the glass are a recurring feature. Globe, clearly reflects her artistic persona; the collection is playful, graphical and minimalist, yet alive. Elegant sculptures handmade in Sweden, available as a dish and vase.



7071501
Dish (white)
5 1/2 x 11 3/7 in.
\$500



7041520
Vase (black)
9 4/9 x 9 4/9 in.
\$500



7041519
Blue

GRAN

Design Sara Persson • 2017



7041629
Vase
4 7/8 in x 4 1/4 in.
\$85



7041631
Vase (wide)
7 3/4 x 7 3/8 in.
\$150



7041630
Vase (tall)
11 7/8 x 4 3/8 in.
\$130



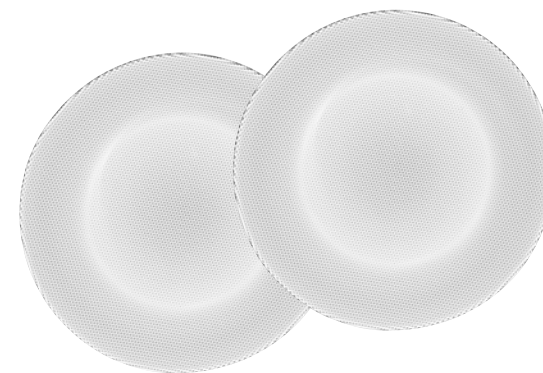
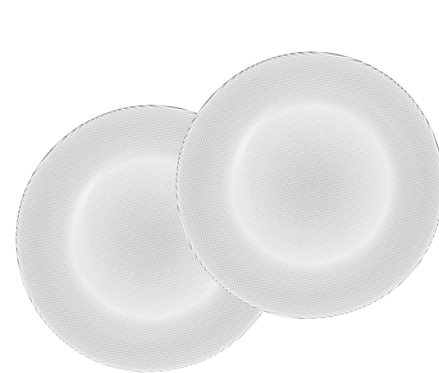
Limelight

Design Göran Wärff • 2017

Kosta Boda celebrates their 275th anniversary by bringing a timeless favourite back into the limelight. Limelight – crystalware designed to shimmer with brilliant luster, by Göran Wärff, a master of creating optical illusions. Dishwasher safe.



Serve your next meal on the plate that unites craftsmanship and timeless elegance. The pattern creates a soothing harmony in the glass, catching the light playfully. Its natural presence on the table always makes an impression, whether it's a Sunday brunch or a mid-week dinner.



7071803 NEW
Side Plate (pair)
3/4 x 7 5/8 in.
\$50

7071804 NEW
Dinner Plate (pair)
1 1/8 x 11 1/4 in.
\$70



7041700
Rose Vase (clear)
9 x 5 3/4 in.
\$75

7041701
Tulip Vase (clear)
7 5/6 x 7 1/4 in.
\$75

7041717
Rose Vase (smoke grey)
9 x 5 3/4 in.
\$75

7041718
Tulip Vase (smoke grey)
7 5/6 x 7 1/4 in.
\$75



7091720
Wine (pair)
5 3/8 x 3 in.
\$50

7091721
Tumbler (pair)
3 3/4 x 2 1/2 in.
\$50

7051700
Bowl on Foot
4 x 4 1/2 in.
\$25

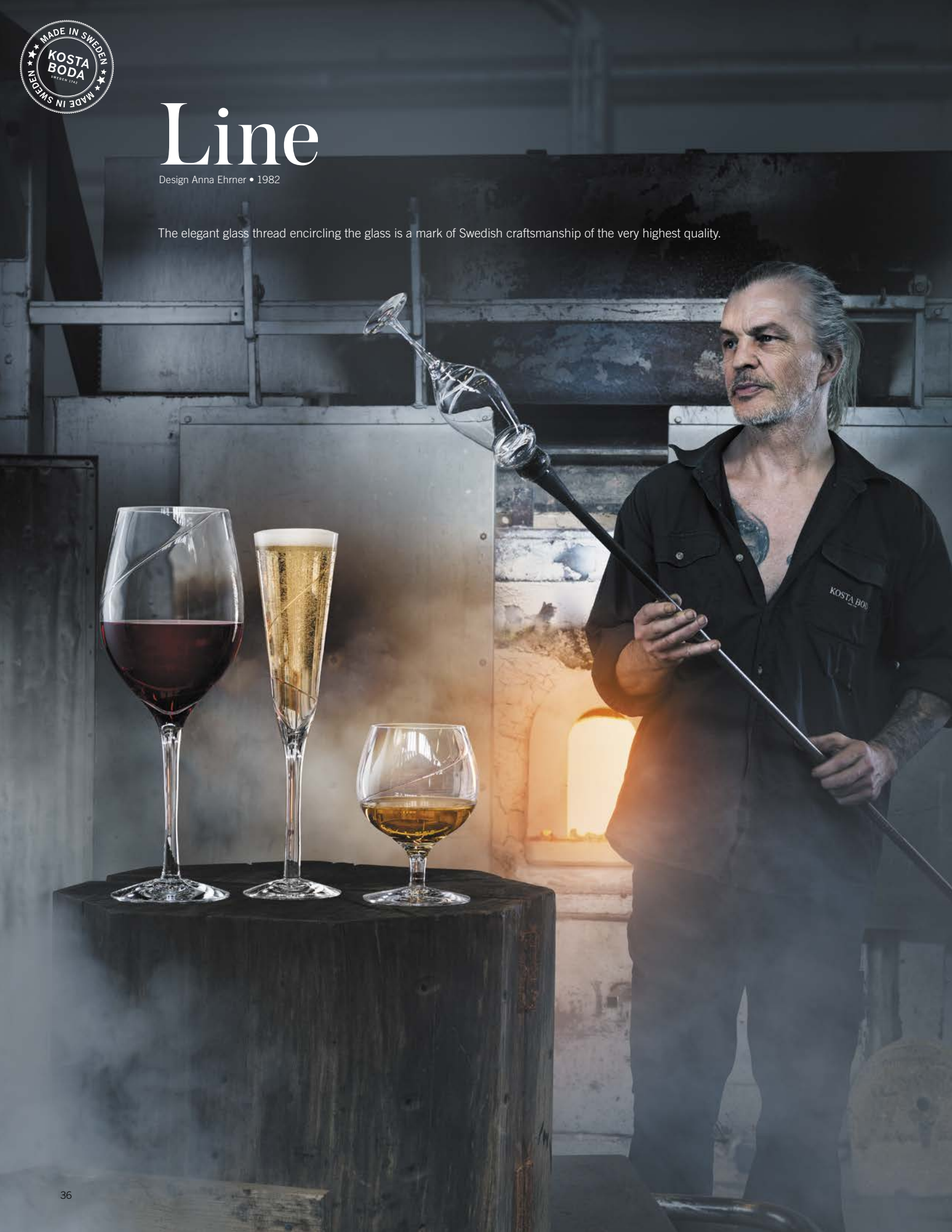
7081720
Jug
9 5/8 x 4 3/4 in.
\$75



Line

Design Anna Ehrner • 1982

The elegant glass thread encircling the glass is a mark of Swedish craftsmanship of the very highest quality.



7021525
Snaps
6 1/8 x 2 1/8 in. 2 1/3 oz.
\$40



7021532
Cognac
5 7/8 x 1 1/2 in. 7 oz.
\$40



7021531
Cognac
4 1/2 x 2 3/8 in. 8 oz.
\$ 40



7021533
Martini
6 1/2 x 4 1/2 in. 7 oz.
\$60



7021513
Wine
9 x 3 3/8 in. 10 3/5 oz.
\$60



7021514
Goblet
10 x 3 1/4 in. 17 3/5 oz.
\$60



7021521
Flute
9 1/2 x 2 1/8 in. 6 1/4 oz.
\$60



7021512
Iced Beverage
7 1/2 x 2 3/4 in. 10 3/5 oz.
\$60



7021553
Tumbler
4 1/8 x 2 3/4 in. 10 1/2 oz.
\$45



7021593
Tumbler
3 1/2 x 3 in. 10 1/2 oz.
\$45



7021595
Tumbler
5 7/8 x 3 in. 15 oz.
\$45



7021562
Carafe
10 5/8 x 4 1/8 in. 33 oz.
\$100

Make Up

Design Åsa Jungnelius • 2008



7091236
Nail Polish (cerise)
7 ½ x 3 in.
\$150



7091215
Mini Nail Polish (raspberry)
5 x 2 in.
\$65



7091152
Red



7091155
Pearl Pink



7091239
Cerise



7090860
Red



7091209
Raspberry



7091510
Stiletto (pearl pink)
4 ⅝ x 4 in.
\$100



7091509
Red



7091508
Cerise



7091350
Amethyst



7091349
Amethyst

Åsa Jungnelius always has a message behind her popular products, and her Make Up series is bursting with symbols of feminine accessories used worldwide.



7091211
Lipstick (raspberry)
8 ½ x 2 ½ in.
\$150



7091240
Mini Lipstick (cerise)
5 ¾ x 1 ½ in.
\$60



7091156
Red



7091159
Pearl Pink



7091237
Cerise



7090907
Red



7091149
Pearl Pink



7091238
Hot Lips (cerise)
2 ½ x 4 in.
\$100



7091046
Red



7091151
Pearl Pink

Mirage

Design Göran Wärff • 2007 • Handmade in Kosta, Sweden

The Mirage series comprises decorative objects for meditation that are also a vase. Warm colours reflect like a spectrum in the soft, round shapes. The pieces are created by master glassblowers at the Kosta glassworks with an angled pipe to create the curved shapes and with the use of a zoom technique to create the different colours. After cooling, Mirage pieces are finished by experienced, skilled cutters. That's how Mirage is brought into being.

“Light – my constant inspiration! From a particular point you can experience something in the Mirage series that also happens in my earlier Saraband collection. You can see what's not there – a phantom Mirage. A similar phenomenon happens on hot days at sea when vessels seem to hover on the horizon – a Mirage.”

Göran Wärff



MIRAGE

Design Göran Wärff • 2007



7040702

Vase (blue green, small)
5 1/2 x 4 5/8 in.
\$470



7040704

Blue Amber



7040706

Grey Red



7040703

Vase (blue green, large)
8 1/4 x 5 1/2 in.
\$525



7040705

Blue Amber



7040707

Grey Red



MY WIDE LIFE
Design Ludvig Löfgren • 2010



7091226
YumYum the Cat
Sculpture
3 ¾ x 2 ½ in.
\$68



7091227
Itsy the Bird
Sculpture
3 ½ x 3 in.
\$68



7091228
Coco the Monkey
Sculpture
3 ¼ x 3 ½ in.
\$68



7091229
Bitsy the Rabbit
Sculpture
3 ½ x 3 in.
\$68



7091224
Toto the Elephant
Sculpture
3 ¼ x 2 ½ in.
\$68



7091231
Rabbit (green/yellow)
Sculpture
8 ½ x 5 in.
\$205



7091230
Rabbit (red/yellow)
Sculpture
8 ½ x 5 in.
\$205



7091221
Owl (yellow/red)
Sculpture
8 ½ x 5 in.
\$235



7091222
Owl (blue/pink)
Sculpture
8 ½ x 5 in.
\$235



7091021
To The Ground
Sculpture
19 ¼ x 9 ⅝ in.
\$310



7091020
Gabba Gabba Hey
Sculpture
12 x 8 in.
\$315

OPEN MINDS

Design Ulrica Hydman-Vallien • 1986 • Handmade in Sweden

Eye to eye. Dramatic brush strokes painted by hand on mouthblown glass. Wonderful just as they are or when used as a flower vase or fruit bowl. Open Minds has made appearances on TV, such as in Sex and the City and Friends. Open minds has become one of Ulrica Hydman Vallien's classics and is a much-loved gift the world over.

Ulrica HV

7071101
Dish (white)
\$235



7041620
Vase (clear/green)
9 ⅞ x 5 ½ in.
\$285



7041622
Clear/Pink



7041621
Clear/Yellow



7041020
Vase (white)
9 ⅞ x 6 in.
\$285



7041516
Silver



7041517
Copper



7091341
Champagne
(white)
9 ½ x 2 ¾ in.
7 oz.
\$157.50



7091317
Shot Glass
(white)
7 x 2 ⅞ in.
3 oz.
\$130.00



7091342
Pink



7091318
Pink



7091343
Blue



7091319
Blue



7091344
Clear



7091320
Clear



7091340
Black



7091316
Black

Organix

Design Anna Ehrner • 2015

Organix is born out of nature, inspired by the seasons. The delicate green symbolizes spring, the stormy blue-black represents autumn and the white is an interpretation of the winter in our beautiful Sweden.

Anna Ehrner



7051523
Frosty White

7051522
Frosty White



7051518
Bowl (stormy blue, medium)
4 ⁵/₇ x 9 ⁴/₉ in.
\$100

7051519
Bowl (stormy blue, large)
6 ²/₇ x 13 ⁷/₉ in.
\$150



7051520
Spring Green

7051521
Spring Green

Orchid

Design Göran Wärff • 2008



Göran Wärff uses warm amber and lilac hues to give us another Kosta Boda classic. The vases and dish are handmade and unique of their kind.



7040856
Vase (low)
11 ³/₈ x 5 ¹/₈ in.
\$500



7040857
Vase (high)
14 ¹/₂ x 5 ¹/₈ in.
\$625

Pluto Candlesticks

Design Lena Bergström • 2018

Among the sparkling, flowing and mysterious planets in Lena Bergström’s universe Pluto takes its place. The man-made base of coloured glass and the candle holder of stainless steel create a piece of Scandinavian style, for homes where pure design is highly wanted.

7061801 NEW
Candlestick (grey)
4 7/8 x 6 1/2 in.
\$50

7061802 NEW
Candlestick (golden brown)
4 7/8 x 6 1/2 in.
\$50

7061800 NEW
Candlestick (clear)
4 7/8 x 6 1/2 in.
\$50



POPPY

Design Kjell Engman • 2014

“The Poppy is associated with Demeter, the Greek goddess of fertility and the harvest. My inspiration comes from the moment the poppy opens up and spreads its seeds across the countryside. The colours symbolize the various play of colours in rain, frost, daylight and sunshine. The incredible shape, with its uneven edges and texture, was a bit of a challenge to create in glass.”

Kjell Engman



7051502
Bowl (large)
11 x 12 1/2 in.
\$550



7051406
Bowl
6 1/2 x 6 1/2 in.
\$400

7061500
Bowl/Votive (small)
3 1/2 x 4 in.
\$285

7071414
Dish
3 1/2 x 13 7/8 in.
\$415



7081500
Pitcher
9 3/4 x 9 1/2 in.
\$425

7041505
Bud Vase
9 x 4 in.
\$285

7041405
Vase (small)
12 3/8 x 6 3/8 in.
\$365

7041406
Vase (large)
22 x 8 1/4 in.
\$525





RED RIM BRAINS

Design Bertil Vallien • 2015

“Back to basics. I wanted to create a classic, decorative and functional series that celebrates craftsmanship and the innate beauty of the glass.”

B. Vallien



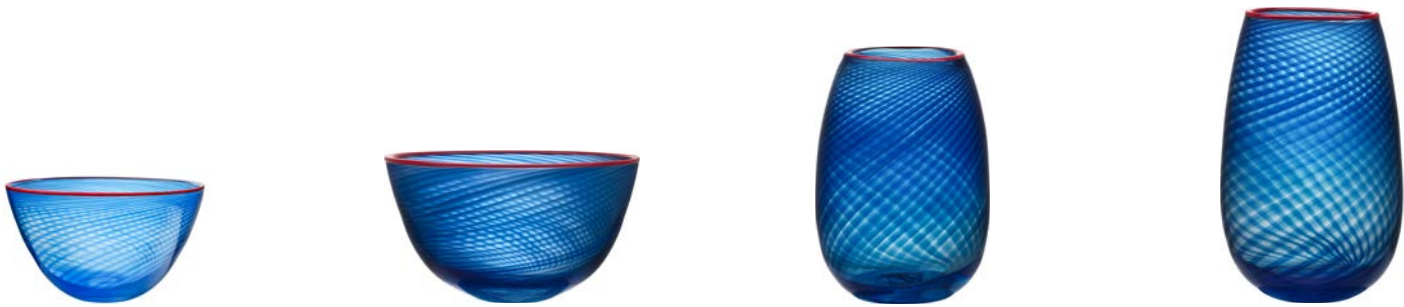
7091535
Footed Bowl (blue)
9 x 8 in.
\$675

7091534
Footed Vase (white)
12 1/8 x 5 1/2 in.
\$675

7091533
Footed Vase (orange)
13 7/8 x 3 in.
\$675

RED RIM

Design Bertil Vallien • 2014



7051500
Bowl (small)
4 x 8 1/2 in.
\$325

7051407
Bowl
6 3/4 x 11 3/8 in.
\$425

7041407
Vase (small)
9 3/8 x 6 3/8 in.
\$395

7041408
Vase (large)
12 3/8 x 8 1/4 in.
\$525



7041502
Bottle (green)
10 3/4 x 5 in.
\$345

7041503
Bottle (white)
13 3/4 x 6 3/4 in.
\$395

7041504
Bottle (blue)
15 3/4 x 6 1/4 in.
\$475

7041501
Vase (footed, orange)
10 1/2 x 5 1/2 in.
\$415





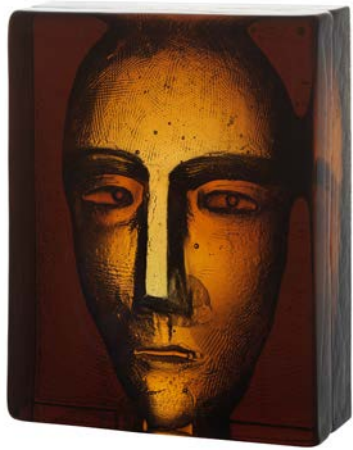
SALUTE

Design Bertil Vallien • 2017

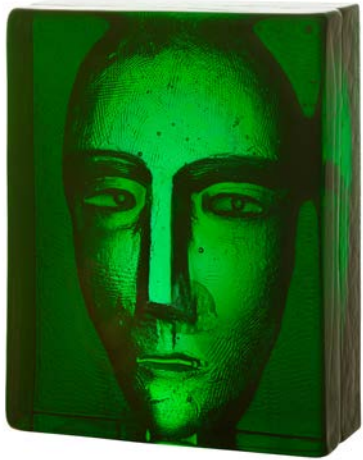


**KOSTA
BODA**
SWEDEN 1742

The elusive clown who wants us to see life as a farce. His picture appears, without his presence, created only by an impression of the light.



7091730
Block (amber)
7 ½ in. x 6 in. x 2 ½ in.
\$200



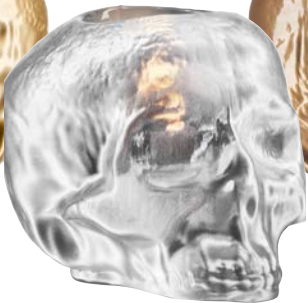
7091729
Block (green)

STILL LIFE

Design Ludvig Löfgren • 2008



7061520
Votive (gold)
3 ¾ x 4 ½ in.
\$55



7061521
Silver
\$55



7061522
Copper
\$55



7060820
Votive (clear)
3 ¾ x 4 ½ in.
\$35



7061523
Light Blue
\$55



7061524
Light Pink
\$55



7061525
Light Green
\$55



7061111
Green
\$55

Snowball

Design Ann Wolff • 1973

The Snowball – the shape and crisp surface of the tealight holder evoke Swedish winters of old, when lanterns of snowballs lit up the winter darkness. Designed by Ann Wärff in 1973 and a Kosta Boda classic. The perfect gift from Sweden, and within Sweden.



7067800
Votive (mini)
2 x 2 in.
\$20
7067354
3-Pack (mini, medium, jumbo)
\$95

7067350
Votive (medium)
2 3/4 x 2 3/4 in.
\$35

7067353
Votive (jumbo)
3 1/2 x 4 1/8 in.
\$40

Swedish Horse

Design Anna Ehrner • 2018

Anna Ehrner – a designer known for her scaled-down, Scandinavian design idiom with sweeping lines and elegant simplicity. She is an artist who infuses this classic craft with a modern expression. Solid glass pieces with swirls of colour inside them have become a hallmark of Anna’s creations. It’s a technique that brings to life the inner strength of the glass.



7015580 **NEW**
Blue and Yellow
4 3/8 x 4 3/4 in.
\$50

7090624 **NEW**
Black and White
4 3/8 x 4 3/4 in.
\$50

Tattoo

Design Ludvig Löfgren • 2010 • Handpainted in Kosta, Sweden

TATTOO

Design Ludvig Löfgren • 2010 • Handpainted in Kosta, Sweden

Glass artist Ludvig Löfgren has long been impressed by the artistry of tattoos, and in Tattoo, he has developed a completely new painting technique using environment friendly paints in a powerfully expressive pattern. Rich in detail, transparent and rock 'n roll romantic.



7051007
Bowl (large)
5 1/8 x 8 7/8 in.
\$175



7091122
Wine Glass (pair)
9 1/4 x 3 1/2 in.
23 oz.
\$110



7041006
Vase
10 x 5 1/2 in.
\$295



7071106
Dish
2 1/2 x 15 in.
\$275



Twine

Design Anna Ehrner • 2014



7041403
Vase (blue, small)
11 3/4 x 5 1/4 in.
\$350



7041404
Vase (blue, large)
15 3/4 x 7 1/4 in.
\$595



7041401
Grey



7041402
Grey

Vision

Design Göran Wärff • 2008

A friendly, watchful eye whose unique movements bring life to the glass.
Once again, Göran Wärff has created a Kosta Boda classic.



7071001
Dish (pink/amber)
3 3/8 x 20 3/8 x 10 in.
\$525



7041117
Vase (green/purple)
10 x 6 1/8 in.
\$525



7050801
Bowl (blue)
9 3/4 x 13 x 8 3/8 in.
\$525





Limited Edition

SEE OUR ART GLASS CATALOG FOR MORE DETAILS



Saraband Vase
Design Göran Wärff



Planet
Design Lena Bergström



Passport
Design Bertil Vallien

Special production of art glass for you.

The manufacture of limited edition and unique glass is entirely handcrafted, and is a collaboration between artists and craftsmen at Kosta glassworks. This unique approach provides Kosta with opportunities to create their own limited edition series or unique items for special occasions. Contact us for a preview for you, your business or organization.

Svea Court of Appeal marks it's 400 year anniversary with a commission by Bertil Vallien in the premises of Riddarholmen, in Stockholm. The work is called "The land shall be built with law".



KOSTA BODA CUSTOM AWARDS

FOTBOLLSGALAN
DESIGN KJELL ENGMAN



EUROVISION SONG CONTEST
DESIGN KJELL ENGMAN



NE KUNSKAPSPRIS
DESIGN BERTIL VALLIEN



LET'S DANCE
DESIGN KJELL ENGMAN

ROOKIES AND PLAYERS
DESIGN ÅSA JUNGNELIUS



STARS ON ICE
DESIGN KJELL ENGMAN



Kosta Boda Art Hotel.

Award-winning Kosta Boda Art Hotel is a hotel that explodes in color, shapes and enjoyment originating in the glass.

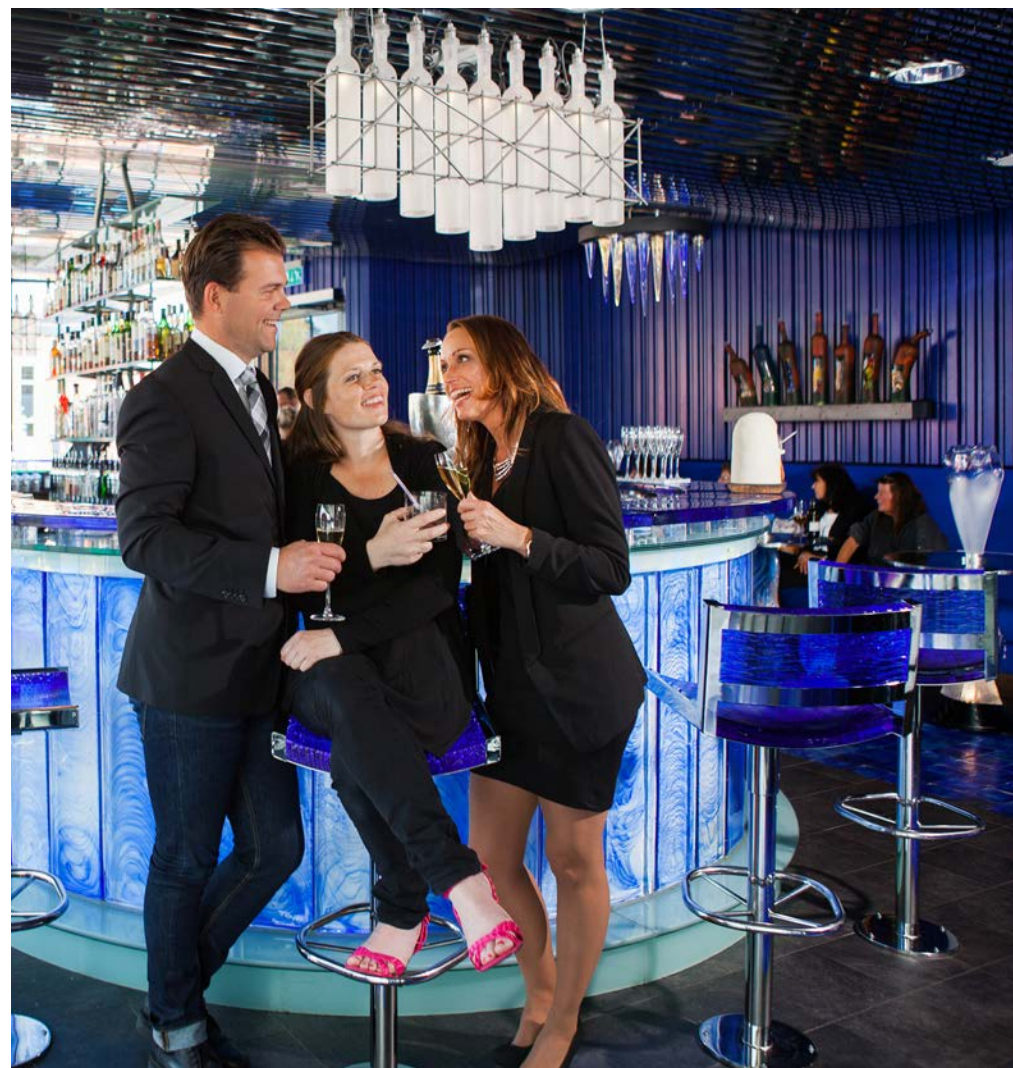
Let us inspire you, whether you are here to relax your body and soul have creative business meetings or just to relax and shop the best of Swedish glass.

Welcome to the Kosta Boda Art Hotel located in Kosta, across the glassworks.



HOTEL • RESTAURANT • SPA • CONFERENCE • GLASS BAR

www.kostabodaarthotel.com +46 (0)478-348 30



Appendix by artists.

LENA BERGSTRÖM	
PLUTO CANDLESTICKS NEW	46
 ANNA EHRNER	
BASKET	9
BRICK	13
BRUK NEW ITEMS	14
CONTRAST	28
GLOBE	33
LINE	36
ORGANIX.....	44
SWEDISH HORSE	53
TWINE.....	56
 KJELL ENGMAN	
CELEBRATE.....	26
CONNECT.....	26
FIDJI.....	32
POPPY.....	47
 ULRICA HYDMAN VALLIEN	
OPEN MINDS	43
 ÅSA JUNGNELIUS	
CRYSTAL MAGIC.....	27
MAKE UP	38
 LUDVIG LÖFGREN	
MY WIDE LIFE	42
STILL LIFE	51
TATTOO	54
 SARA PERSSON	
BJÖRK.....	10
GRAN	33
 MATTIAS STENBERG	
SEPTUM.....	50


BERTIL VALLIEN	
BOHEME	11
BRAINS	11
BIG BRAINS	12
DREAMER	32
EARTH	32
RED RIM	48
RED RIM BRAINS.....	48
SALUTE.....	51
SILVER PIPES	50
 GÖRAN WÄRFF	
LIMELIGHT NEW ITEMS	34
MIRAGE.....	40
ORCHID.....	45
VISION.....	57
 ANN WOLFF	
SNOWBALL	52
 SARA WOODROW	
ALL ABOUT YOU	8





RETAILERS

Kosta Boda can today be found worldwide at well-stocked boutiques, exclusive department stores, finest hotels, and in the best restaurants, and has a long and prosperous relationship with KaDeWe in Berlin, Isetan in Tokyo, David Jones in Australia and Bloomingdales in the U.S.A. Find your nearest retailer at www.kostaboda.com

SOCIAL MEDIA

 **INSTAGRAM**
[@kostaboda](#)

 **FACEBOOK**
facebook.com/kostaboda

 **WEBSITE**
www.kostaboda.com

SHOWROOMS

NEW YORK, USA 41 Madison Ave, Fl 9th +1 800 351 9842 www.kostaboda.us	STOCKHOLM, SWEDEN Barnhusgatan 16 111 23 Stockholm +46 (0) 478 345 90	COPENHAGEN, DENMARK Lyskær 13A 2730 Herlev +45 5153 7144
ATLANTA, USA AmericasMart 235 Williams St. NW Ste 893 www.k2tshowroom.com	GOTHENBURG, SWEDEN Kungssportsavenyen 10 411 36 Göteborg +46 (0) 31 712 89 10	OSLO, NORWAY Karenslyst Allé 5, 3; etg 0278 Oslo +47 4832 8131
CUSTOMER SERVICE +1` 800 433 4167 websupport@okbusa.com	SHANGHAI, CHINA 345 Shilong Road, No. 27 +86 021 8016 2097 www.kostaboda.cn	ESPOO, FINLAND Juvan Teollisuuskatu 12 02920 Espoo +358 9 5259 580
KOSTA, SWEDEN Stora vägen 96 360 52 Kosta +46 (0) 478 345 00		



KOSTA BODA

1317 Route 73
Suite 201
Mount Laurel, NJ 08054

(800) 351-9842

kostaboda.com